

# Claude Monet

## Impressionism

Impressionism was an artistic movement of the late 1800's. The style emphasizes the play of light upon the subjects and focuses on creating an impression of the scene rather than rendering it with photographic precision. Brush strokes are often visible. Claude Monet is widely recognized as an originator of the style and one of its foremost practitioners.



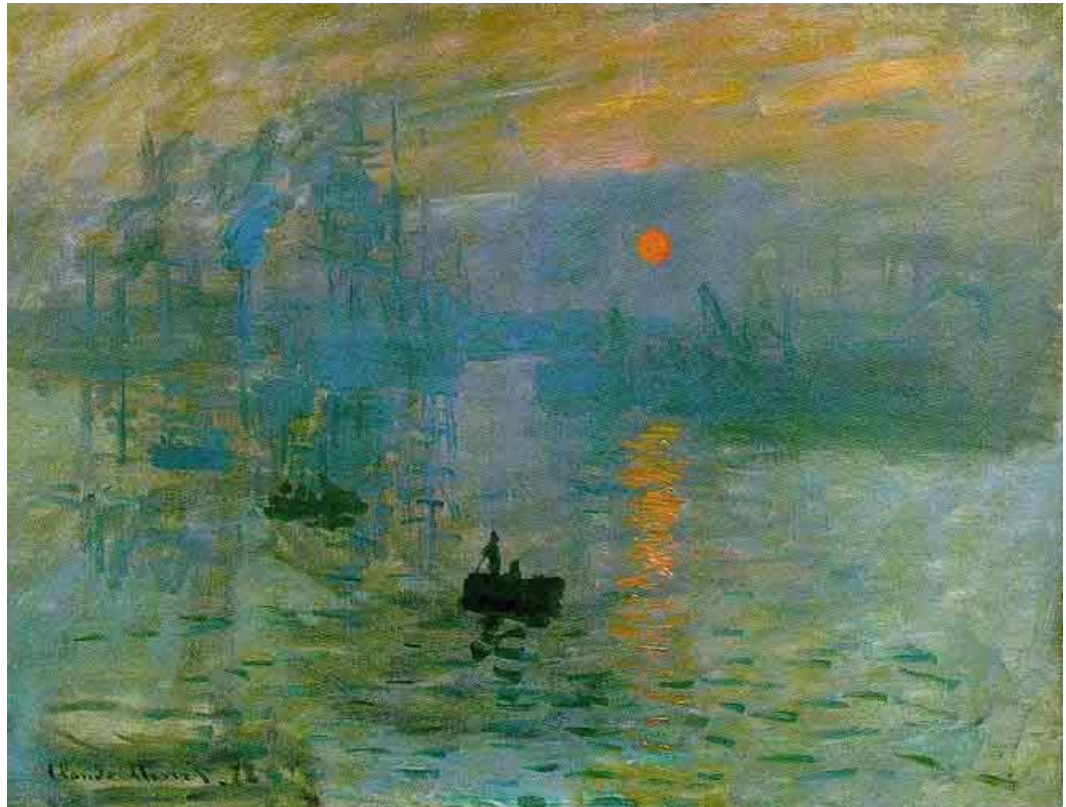
**Woman in a Garden**



**The Japanese Footbridge**



**The Cliffs at Etretat**



**Impression, Sunrise**